

Former Naval Station Treasure Island, San Francisco



Naval Station Treasure Island – History

- Two islands linked by a causeway: Yerba Buena Island (YBI) (natural) & Treasure Island (TI)(constructed) and adjacent offshore areas
- 1936 – TI built of SF Bay sediment for World's Fair
- 1940 - Navy leases TI from City of SF for training & assembling service personnel into ships crews, military housing, industrial uses & home port for naval vessels
- 1997 – Naval Station TI closed



*Golden Gate International Exposition,
World's Fair – 1939/1940*

Site Investigation and Cleanup

- **US Navy is the lead federal agency for site investigation and cleanup**
- **DTSC is the oversight agency**
- California Department of Public Health (**CDPH**) is the state's radiological expert under contract with DTSC
 - Oversees radiological investigation and cleanup
 - Conducts independent radiological screening



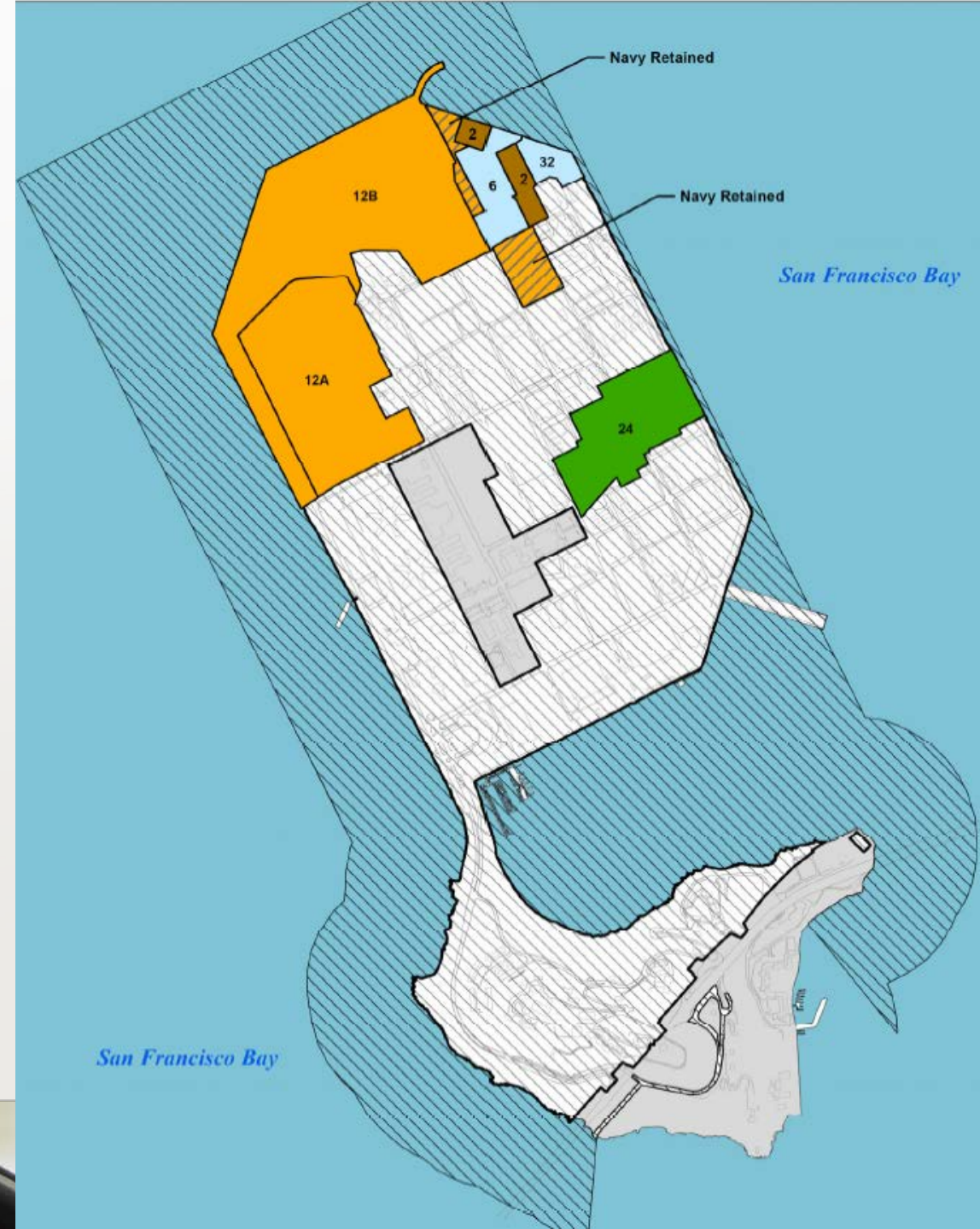
Industrial History and Contaminant Sources

Varied industrial uses since 1941, for example:

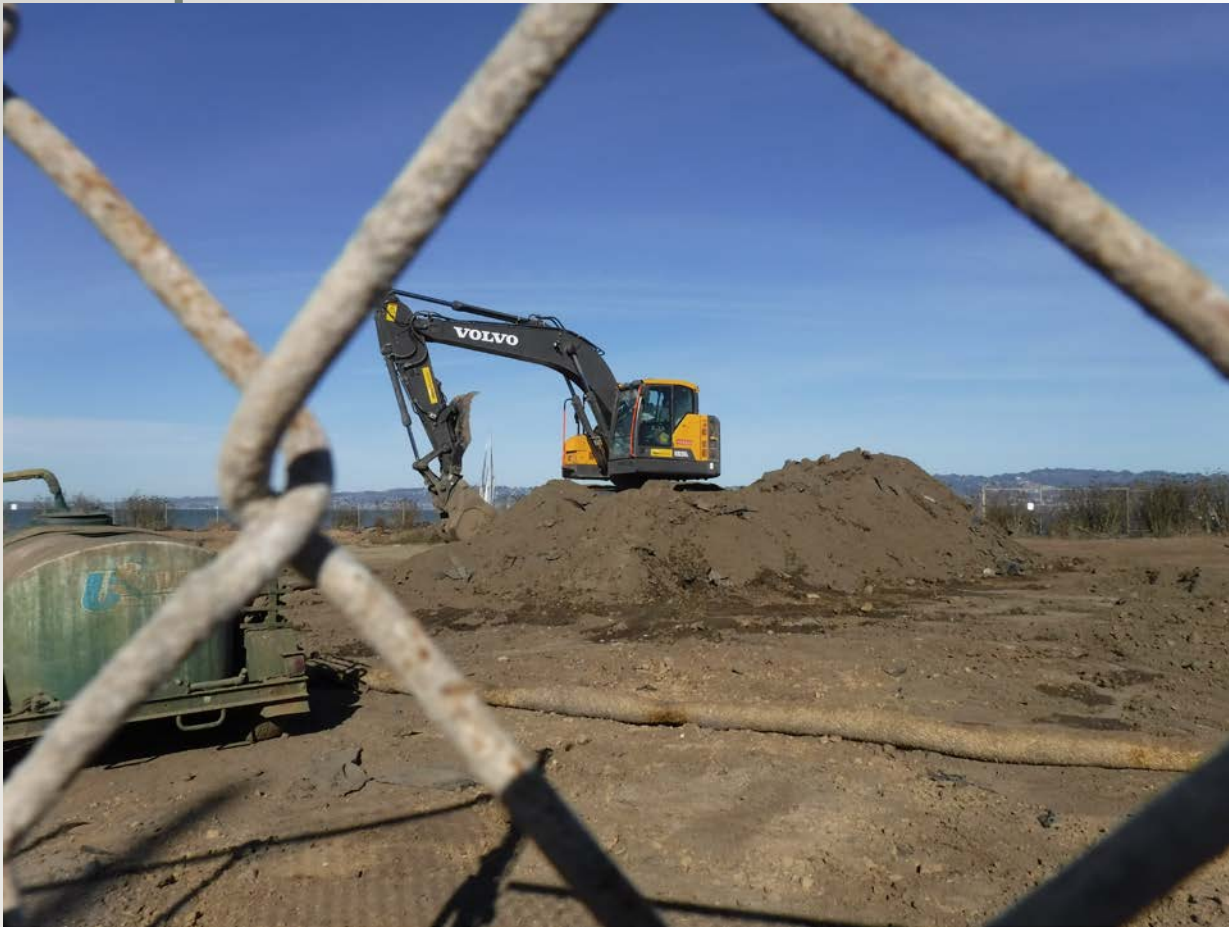
Site Number/Name	Industrial Activity	Potential Contaminants
6	Fire Training School	Dioxins & Furans, TPH, VOCs, and PAHs
12	Old Bunker Area/Solid Waste Disposal Areas	PCBs, PAH, dioxins, TPH, metals, & Radium 226
24	Dry Cleaning Facility	Chlorinated solvents, petroleum, lubricants
32	Former Training and Storage Area	PCBs, TPH, dioxins, pesticides, and arsenic
Within 32	Radiological Decontamination Training at USS <i>Pandemonium</i> Site II	Radium 226
Building 461	Radiological Training	Radium 226

Remediation & Transfer Status

- Much of TI cleanup completed & transferred to TI Development Agency, Dept of Labor, or U.S. Coast Guard
- Remaining parcels to transfer
- Parcel 24 **green** - dry cleaner site
- Parcels 2, 6, & 32 **light blue** & **dark orange** - training areas
- Parcels 12A, 12B, & Navy Retained **orange** - housing & solid waste disposal areas



Waste Piles



Ongoing Activities

- Cleanup remaining chemical & radiological sites
- Multi-disciplinary regulatory oversight team
- Work to enhance existing site controls
- Continued on-site & site perimeter fence-line monitoring to ensure workers & community safety
- DTSC will ensure that properties are safe for future use
- Interim leasing includes exposure controls



For More Information

<https://www.envirostor.dtsc.ca.gov>

**NAVAL STATION TREASURE
ISLAND (38370044)**

